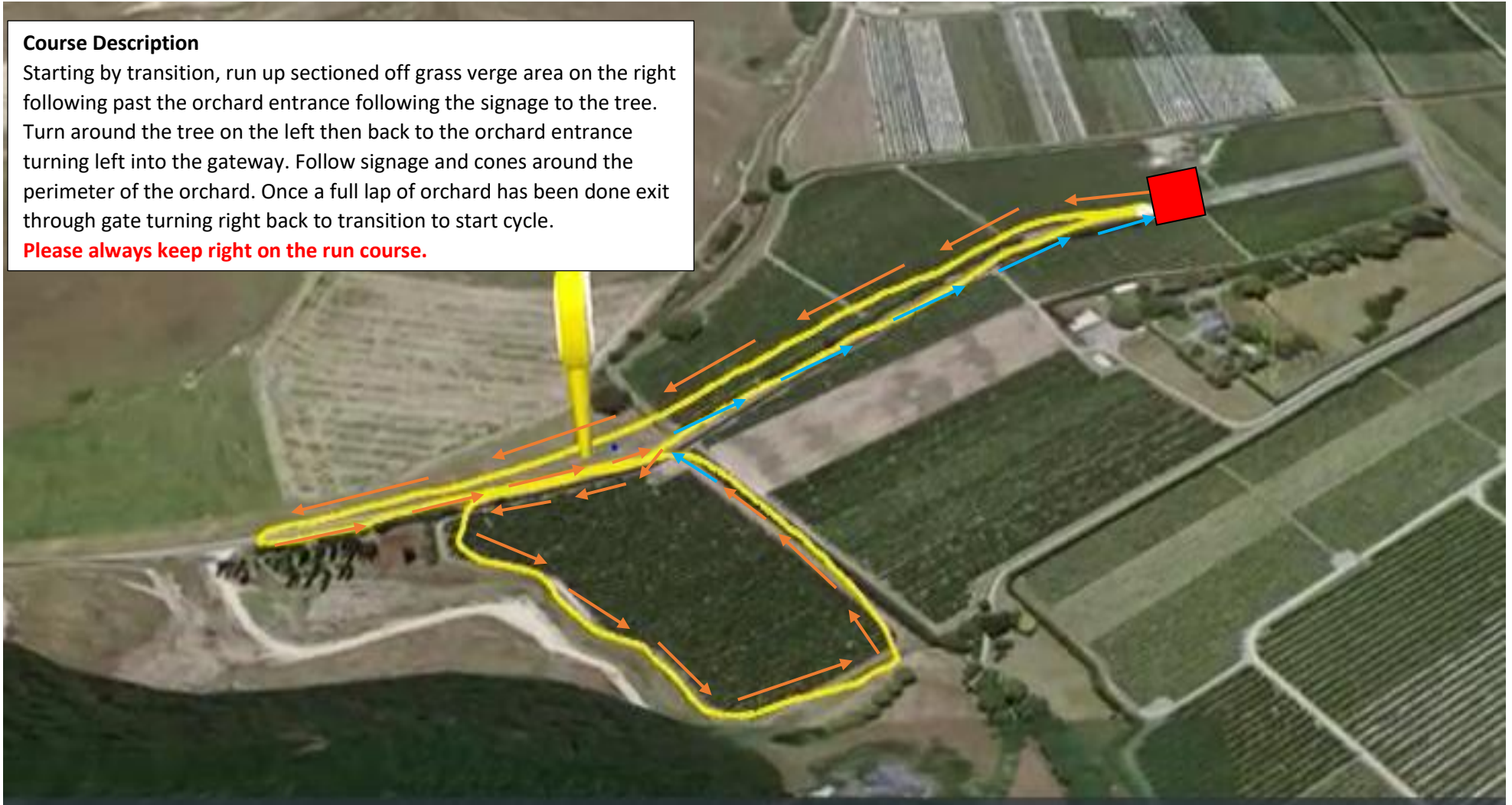


Course Description


Starting by transition, run up sectioned off grass verge area on the right following past the orchard entrance following the signage to the tree. Turn around the tree on the left then back to the orchard entrance turning left into the gateway. Follow signage and cones around the perimeter of the orchard. Once a full lap of orchard has been done exit through gate turning right back to transition to start cycle.

Please always keep right on the run course.




 2k km

DISTANCE

 12 m

ELEVATION GAIN

 Transition- Start/Finish

 OUT

 BACK